

# IEC AV/Computer Cooperative Purchase Program Catalog

## MULTIMEDIA PROJECTORS: A Catalog Discount

### 59% Discount for the entire line of Optoma multimedia projectors - Optoma Technology, Inc.

MNJ Technologies Direct, Inc. offers a 59% discount from MSRP for the entire line of Optoma Technologies Multimedia Projectors. This contract is valid through September 2011. To see products and pricing, go to the IEC website [www.iec-ia.org](http://www.iec-ia.org) and click on the "AV & Computer" link. Then select "Discounted Catalogs" & "Optoma". Next, find the "CLICK HERE" to access Optoma products and price lists. If you have an active account with MNJ you can order online either for school or for personal purchases. Otherwise, you can use the info to create your own purchase order and fax it to 319-752-7525. Contact Ash Green or Patrick Barnes for assistance when choosing a projector or for ordering assistance.

Ash Green, Senior Account Manager; 800-870-4340 x8396 or [agreen@mnjtech.com](mailto:agreen@mnjtech.com)

Patrick Barnes, Senior Account Manager; 800-870-4340 x8377 or [pbarnes@mnjtech.com](mailto:pbarnes@mnjtech.com)

Order # 22490

Co-op Price: \$0.00

MSRP:

Vendor: MNJ Technologies Direct, Inc.

<http://www.mnjtech.com/iowa>



## MULTIMEDIA PROJECTORS: 3-D

### DLP Link 3D Glasses w/ 3 interchangeable nose pieces - Optoma Technology Inc. BG-ZD101 Pkg/1

120 hertz active shutter 3D glasses; Battery powered. For Optoma DLP 3D Projectors; Supports XGA, WXGA And 720p Resolutions; 1000:1 Contrast Ratio; Blur-Free 3D Experience Active Shutters; 50' (15 m) Effective Use Distance; Batteries (CR2032 x 2) Included; Up to 70 hours of Continuous Usage. Range of Operation 50 ft. (15 m). 3 x Interchangeable Nose Pieces (Small, Medium, Large). User Manual. For use with a DLP projector with 3D capability and a 3D-capable Blu-ray player along with a 3D Blu-ray movie.



Order # 22500

Co-op Price: \$59.48

MSRP: \$99.00

Vendor: MNJ Technologies Direct, Inc.

<http://www.optomusa.com/products/detail/BG-ZD101>



### DLP Link 3-D Active Shutter Glasses - XPAND VVT VVTX102EDU Pkg / 1

XPAND DLP-Link Active Shutter Glasses (Model No. X102) are compatible with every DLP Link product, 3D Ready DLP projectors from all manufacturers, and Mitsubishi and Samsung DLP Rear projection TVs. The XPAND DLP-Link 3D Glasses are sealed, waterproof and washable. 120 hour battery; 1-Yr warranty.



Order # 22510

Co-op Price: \$66.95

MSRP:

Vendor: Troxell Communications, Inc.

<http://www.xpand.me/products/dlp-link-glasses-x102/>



### DLP Link 3-D Active Shutter Glasses - XPAND VVT VVTX102EDU-30 Pkg / 30

XPAND DLP-Link Glasses (Model No. X102) are compatible with: with every DLP Link product, 3D Ready DLP projectors from all manufacturers, and Mitsubishi and Samsung DLP Rear projection TVs. The XPAND DLP-Link 3D Glasses are sealed, waterproof and washable.



Order # 22520

Co-op Price: \$1915.80

MSRP:

Vendor: Troxell Communications, Inc.

<http://www.xpand.me/products/dlp-link-glasses-x102/>



### 3-D Glasses for iR Based 3D HDTVs - XPAND VVT VVTX103 Pkg / 1

Universal 3D Glasses, compatible with all active (IR based) 3D TVs; Full 1080 3D resolution to both eyes; Wide 3D viewing angle for multiple viewers/players; The fastest shuttering speed eliminating headaches, fatigue, and eyestrain; High transmission ratio for bright images. 30% lighter frame and ergonomic design for long wearing comfort; Standard CR2032 Battery door locked, can be easily opened manually; Battery life: upto 100 hours depending on usage scenario; Non sealed/non washable; Non-foldable, replaceable arms; Exchangeable nosepiece; XPAND Warranty and Support 1 year limited product repair / replacement warranty; Direct online and email access to dedicated technical support team; Optional replacement accessories available.



Order # 22530

Co-op Price: \$73.13

MSRP:

Vendor: Troxell Communications, Inc.

<http://www.xpand.me/cinema/>



### 3-D Glasses for iR Based 3D HDTVs - XPAND VVT VVTX103 Pkg / 30

Universal 3D Glasses, compatible with all active (IR based) 3D TVs; Full 1080 3D resolution to both eyes; Wide 3D viewing angle for multiple viewers/players; The fastest shuttering speed eliminating headaches, fatigue, and eyestrain; High transmission ratio for bright images. 30% lighter frame and ergonomic design for long wearing comfort; Standard CR2032 Battery door locked, can be easily opened manually; Battery life: upto 100 hours depending on usage scenario; Non sealed/non washable; Non-foldable, replaceable arms; Exchangeable nosepiece; XPAND Warranty and Support 1 year limited product repair / replacement warranty; Direct online and email access to dedicated technical support team; Optional replacement accessories available.



Order # 22540

Co-op Price: \$2101.20

MSRP: \$3570.00

Vendor: Troxell Communications, Inc.

<http://www.xpand.me/cinema/>



### 3-D Glasses - XPAND VVT VVTXCASE-EDU

XPAND 3D Glasses carrying case w/foam inserts - holds 30 pair (glasses not included).

Order # 22550

Co-op Price: \$146.26

MSRP:

Vendor: Troxell Communications, Inc.



## MULTIMEDIA PROJECTORS: Classroom Multimedia Projectors

### DLP 2800 Lumen Classroom Multimedia Projector (SVGA) - Optoma Technology Inc. TS551

DLP; 2800 lumen; Native SVGA (800 x 600) ; 3500:1 contrast ratio; Aspect Ratio 4:3 Native, 16:9 and 16:10 Compatible; Lamp Life 5000/6000 Hr; Image Size 30" to 300"; Projection Distance 3.94' to 39.4'; Loop Through Monitor: D-Sub 15-Pin VGA Output Audio: Stereo Mini-Jack Output (Functional in Both Normal and Standby Modes)/O Connectors HDMI, Two VGA-In, VGA-Out, S-Video, Composite Video, Audio-In, Audio-Out, RS-232 and USB Type B. Standard Accessories AC Power Cord, VGA to VGA Cable, Remote Control, Batteries for Remote, USB Cable, Carrying Case, Lens Cap, CD-ROM User's Manual, Quick Start Card and Warranty Card 5 Yr Warranty, the first 3 years are covered by EXPRESS replacement, and the 4th and 5th years are covered for parts and labor. 1 year lamp warranty



Order # 22560

Co-op Price: \$362.30

MSRP: \$859.00

Vendor: MNJ Technologies Direct, Inc.

<http://www.optomusa.com/products/detail/TS551>

1



### DLP 2500 Lumen 3D Classroom Multimedia Projector (SVGA) - BenQ MS500

SVGA; 2500 lumens; 3D capable; 4000:1 contrast ratio; 4:3 native aspect ratio with 5 selectable; 24"-300" image size; 4500/6000 hr lamp; Interface Computer in (D-sub 15pin) x 2 (shared with Component) ; Monitor out (D-sub 15pin) x 1; Composite Video in (RCA) x 1; S-Video in (Mini DIN 4pin) x 1; Audio in (Mini Jack) x 1; Audio out (Mini Jack) x 1; Speaker 2W x 1; USB (Type Mini B) x 1 (Download & Page up/down); RS232 (DB-9pin) x 1; Dimensions(W x H x D) 11.30" x 3.94" x w.13". Includes Remote Control w/ Battery, Power Cord, User Manual CD, Quick Start Guide, Warranty Card, VGA (D-sub 15pin) Cable. 5.51 lbs. 5-Yr Parts and Labor Warranty. 1 Yr. Lamp warranty.



Order # 22570

Co-op Price: \$337.84

MSRP: \$549.00

Vendor: Troxell Communications, Inc.

<http://www.benq.us/product/projector/ms500/specifications>



### DLP 2600 Lumen Classroom Multimedia Projector (XGA) - NEC NP-V260X

DLP; XGA Native 1024x768; 2600 lumen; 3D ready; 3500/5000 Hr lamp; Screen Size (diagonal) 33 to 300 in; Projection Distance 3.9 to 39.4 ft; Input/Output Terminals RGB1(analog) VGA 15-pin D-sub, Component video using ADP-CV 1E; RGB2(analog) VGA 15-pin D-sub, Component video using ADP-CV 1E; RGB3(digital) HDMI; Video 1 RCA; Video 2 S-Video; Audio 1 1/8 in. stereo; Audio 2 1/8 in. stereo; Audio 3 L/R RCA (shared by video sources); Monitor out VGA 15-pin D-sub; Audio out 1/8 in. stereo (Variable audio out); Audio 7W speaker; External Control RS-232, IR, Wired LAN RJ-45; Closed Captioning; Variable Audio Out; Virtual Remote; Ships With Remote control; Batteries; Power cord; RGB signal cable; Lens cap; User manual; Quick Start Guide; Product registration card; 6-segment color wheel. 2-Yr standard warranty with upgrade to Two (2) FREE additional years of parts and labor for 4 years total warranty when registering with the NEC Star Student Program (<http://www.necstarstudent.com/about/#warranties>). 1-Yr/500 Hr Lamp Warranty. NEC is now requiring tax exemption form with each order. Please send your tax exemption form with your Purchase Order.

Order # 22580

Co-op Price: \$450.11

MSRP: \$549.00

Vendor: Kansas City Audio-Visual, Inc.

<http://www.necdisplay.com/p/multimedia-projectors/np-v260>



### LCD 2400 Lumen Classroom Multimedia Projector (XGA) - Epson 92

Pricing for this product is for Iowa Customers only.  
LCD; XGA; 2400 Lumens, 5000/6000 Hr lamp, 4:3 aspect ratio; 30"-300" image; 2000:1 contrast; 16W Speaker, Computer/component video: D-sub 15 pin x 2 S-video: Mini DIN x 1 Composite video: RCA (Yellow) x 1 Audio in: RCA x 1 (L and R), Mini stereo x 2 USB connector: Type B x 1 (USB display, audio and mouse control) USB connector: Type A x 1 (USB memory/ document camera) HDMI x 1 Monitor out: D-sub 15 pin x 1 Variable audio out: Mini stereo x 1 Serial: RS-232c x 1 ; 6.9 lbs; 5 Yr Express Parts and Labor Warranty.

Order # 22590

Co-op Price: \$457.32

MSRP: \$649.00

Vendor: Midwest Computer Products, Inc.

[http://www.epson.com/cgi-bin/Store/jsp/Product.do?sku=V11H381020&BV\\_UseBVCookie=yes](http://www.epson.com/cgi-bin/Store/jsp/Product.do?sku=V11H381020&BV_UseBVCookie=yes)



## LCD 2400 Lumen Classroom Multimedia Projector (XGA) - Epson 93

Pricing for this product is for Iowa Customers only.  
LCD; 2400 lumens; Native Resolution: 1024 x 768 (XGA); HDTV compatible; 5000/6000 hour lamp; Throw Ratio Range: 1.48 - 1.77; Projected distance 30"-300"; Contrast Ratio: Up to 2000:1; aspect ration 4:3; Manual optical zoom / Manual focus; 16 watt speaker; Interfaces: Computer / Component video: D-sub 15 pin x 2; S-video: Mini DIN x 1; Composite video: RCA (Yellow) x 1; Audio in: RCA x 1 (L and R), Mini stereo x 2; USB connector: Type B x 1 (USB display, audio and mouse control); USB connector: Type A x 1 (USB memory / document camera); HDMI x 1; RJ-45 x 1; Serial: RS-232c x 1; Monitor Out: D-sub 15 pin x 1; Audio out: Mini stereo x 1; LAN Networking: RJ-45 x 1; Speaker: 16 W monaural; Operating Temperature: 41° to 95° F. Remote Control with Operating Distance of 19' . New high-density filter twice the surface area of our previous generation adds a higher level of protection; Weight 6.9 lbs; Genuine Epson lamp V13H010L60 0; Replacement air filter V13H134A29; 5-Year Parts and Labor Warranty.

Order # 22600

Co-op Price: \$468.65

MSRP: \$699.00

Vendor: Midwest Computer Products, Inc.



[http://www.epson.com/cgi-bin/Store/jsp/Product.do?sku=V11H382020&BV\\_UseBVCookie=yes#2](http://www.epson.com/cgi-bin/Store/jsp/Product.do?sku=V11H382020&BV_UseBVCookie=yes#2)

## MULTIMEDIA PROJECTORS: Short Throw Multimedia Projectors

### DLP 3100 Lumen Short Throw, Close Focus Multimedia Projector (WXGA) - Optoma Technology Inc. TW610ST

DLP; WXGA native; 3D; 3100 lumens; 3000:1 contrast ratio; 3000/4000 hr lamp; 1.6" - 8.2" projectioin distance; 44.6"-222.8 image; 16:10, 16:9, 4:3 aspect ratio; two 5-watt speakers; IR remote mouse control; Loop Through D-Sub 15-Pin VGA Output (Functional in Both Normal and Standby Modes); Closed Captioning; I/O Connectors HDMI, Two VGA-In, VGA-Out, S-Video, Composite Video, RCA Stereo Audio-In, Stereo Audio-In, Stereo Audio-Out, Microphone-In, RJ45, RS-232, and USB; Keystone Correction ±40° Vertical; 6.9 lbs; 5 year warranty for our quoted projectors; 5 year warranty, the first 3 years are covered by EXPRESS replacement, and the 4th and 5th years are covered for parts and labor; 1 Year Lamp Warranty.

Order # 22610

Co-op Price: \$681.35

MSRP: \$1999.00

Vendor: MNJ Technologies Direct, Inc.



<http://www.optomusa.com/products/detail/TW610ST>

## MULTIMEDIA PROJECTORS: Ultra Close Focus Multimedia Projectors

This item has been discontinued. ~ LCD 3000 Lumen Ultra-Close focus Multimedia Projector (XGA) - Epson 460

Order # 22620

Co-op Price: \$991.89

MSRP: \$1599.00

Vendor: Midwest Computer Products, Inc.

## 5th Year Warranty for Epson 460 - Epson BFEPFTA1

Pricing for this product is for Iowa Customers only.  
5th Year Parts and Labor warranty for Epson 460.

Order # 22630

Co-op Price: \$40.17

MSRP:

Vendor: Midwest Computer Products, Inc.

## LCD 2500 Lumen Ultra-Close focus Multimedia Projector (WXGA) - Epson 450W

Pricing for this product is for Iowa Customers only.  
LCD; 2500 Lumens; Native WXGA 16:10 resolution; 2500/3500 Hr. lamp life; Contrast Ratio Up to 2000:1; Project 80" images from 24" away. Built-in 10 W speaker, closed captioning decoder, microphone input, ability to deliver content over the network. USB Plug 'n Play instant setup instantly projects images from a PC or Mac; PC-free slideshows project photos (JPEG) via a USB thumb drive; Size (projected distance) 16:10 60" - 96" (19" - 30"); Interfaces: Computer/component video: D-sub 15 pin x 2, S-video: Mini DIN x 1, Composite video: RCA x 1, Audio in x 3 (RCA (L&R) x 1, mini stereo x 2); Variable audio out: mini stereo x 1; LAN networking: RJ-45 x 1; Serial: RS-232c x 1; Monitor out: D-sub 15 pin x 1; USB Type B x 1 (USB display, mouse, keyboard interface); USB Type A x 1 (USB memory device); Wireless port 802.11 a/b/g (optional module sold separately); Speaker 10 W monaural; Operating Temperature 41 ° to 95 ° F (5 ° to 35 ° C). Fan noise 28-35 dB; remote control. 4-Year Express Exchange Parts and Labor Warranty. 1-Yr. or 500 hour lamp warranty. Lamp part# V13H010L57, Air Filter # V13H134A27.

Order # 22640

Co-op Price: \$991.89

MSRP: \$1599.00

Vendor: Midwest Computer Products, Inc.



[http://www.epson.com/cgi-bin/Store/jsp/Product.do?sku=V11H318020&BV\\_UseBVCookie=yes](http://www.epson.com/cgi-bin/Store/jsp/Product.do?sku=V11H318020&BV_UseBVCookie=yes)

## 5th Year Warranty for Epson 450W - Epson BFEPFTA1

Pricing for this product is for Iowa Customers only.  
5th Year Parts and Labor warranty for Epson 450W.

Order # 22650

Co-op Price: \$40.17

MSRP:

Vendor: Midwest Computer Products, Inc.

## MULTIMEDIA PROJECTORS: Interactive Multimedia Projectors

Lower Price. See Item 22661. ~ LCD 2500 Lumen Interactive Ultra-Close focus Multimedia Projector (WXGA) - Epson Brightlink 455Wi w RM Easy-Teach

Order # 22660

Co-op Price: \$1663.45

MSRP: \$2299.00

Vendor: Midwest Computer Products, Inc.

**LCD 2500 Lumen Interactive Ultra-Close focus Multimedia Projector (WXGA) - Epson BrightLink 455Wi w RM Easy-Teach**

Iowa Customers only.

Interactive, LCD, 2500 lumens; Ultra-Close focus WXGA Multimedia Projector; Built-in WhiteBoard Capability. 2500/3500 lamp life; contrast ratio 2000:1; USB Plug 'n Play for Windows 2000 or later, Mac OS X 10.5.1 or later; Interfaces: D-sub 15 pin x 2, S-video: Mini DIN x 1, Composite video: RCA x 1, Audio in x 3 (RCA (L&R) x 1, mini stereo x 2), mic in x 1, Variable audio out: mini stereo x 1, networking RJ-45 x 1, Serial: RS-232c x 1, Monitor out D-sub 15 pin x 1, USB Type B x 1 (USB display, interactive pen), USB Type A x 1 (USB memory device), Speaker 10 W monaural; 14.5"W x 19.0"D x 6.1"H, Weight:14.1 lb with slide plate. Projector + pen combination integrates interactive functionality in one machine. Includes 4-year Express Exchange Parts and Labor, 1-Yr. or 500 hour lamp warranty; Includes Mount, RM Easyteach software.

**Order # 22661**

**Co-op Price: \$1509.71**

MSRP: \$2299.00

Vendor: Midwest Computer Products, Inc.

[http://www.epson.com/cgi-bin/Store/jsp/Product.do?sku=V11H440020&BV\\_UseBVCookie=yes](http://www.epson.com/cgi-bin/Store/jsp/Product.do?sku=V11H440020&BV_UseBVCookie=yes)



**Lower Price. See Item 22671. ~ LCD 2500 Lumen Interactive Ultra-Close focus Multimedia Projector (WXGA) - Epson BrightLink 455Wi VALUE w/ RM Easy-Teach**



**Order # 22670**

**Co-op Price: \$1478.05**

MSRP: \$2299.00

Vendor: Midwest Computer Products, Inc.

**LCD 2500 Lumen Interactive Ultra-Close focus Multimedia Projector (WXGA) - Epson BrightLink 455Wi VALUE w/ RM Easy-Teach**

Iowa Customers only.

Interactive, LCD, 2500 lumens; Ultra-Close focus WXGA Multimedia Projector; Built-in WhiteBoard Capability. 2500/3500 lamp life; contrast ratio 2000:1; USB Plug 'n Play for Windows 2000 or later, Mac OS X 10.5.1 or later; Interfaces: D-sub 15 pin x 2, S-video: Mini DIN x 1, Composite video: RCA x 1, Audio in x 3 (RCA (L&R) x 1, mini stereo x 2), mic in x 1, Variable audio out: mini stereo x 1, networking RJ-45 x 1, Serial: RS-232c x 1, Monitor out D-sub 15 pin x 1, USB Type B x 1 (USB display, interactive pen), USB Type A x 1 (USB memory device), Speaker 10 W monaural; 14.5"W x 19.0"D x 6.1"H, Weight:14.1 lb with slide plate. Projector + pen combination integrates interactive functionality in one machine. Includes 4-year Express Exchange Parts and Labor, 1-Yr. or 500 hour lamp warranty; Includes Mount, RM Easyteach software. VALUE PACKAGES DO NOT HAVE 15' USB OR XGA CABLE, PEN TRAY, OR BATTERY CHARGER.



**Order # 22671**

**Co-op Price: \$1323.44**

MSRP: \$2299.00

Vendor: Midwest Computer Products, Inc.

[http://www.epson.com/cgi-bin/Store/jsp/Product.do?sku=V11H440320RM&BV\\_UseBVCookie=yes](http://www.epson.com/cgi-bin/Store/jsp/Product.do?sku=V11H440320RM&BV_UseBVCookie=yes)



**Lower Price. See Item 22681. ~ LCD 2500 Lumen Interactive Ultra-Close focus Multimedia Projector (WXGA) - Epson BrightLink 455Wi VALUE**



**Order # 22680**

**Co-op Price: \$1385.35**

MSRP: \$2199.00

Vendor: Midwest Computer Products, Inc.

**LCD 2500 Lumen Interactive Ultra-Close focus Multimedia Projector (WXGA) - Epson BrightLink 455Wi VALUE**

Iowa Customers only.

Interactive, LCD, 2500 lumens; Ultra-Close focus WXGA Multimedia Projector; Built-in WhiteBoard Capability. 2500/3500 lamp life; contrast ratio 2000:1; USB Plug 'n Play for Windows 2000 or later, Mac OS X 10.5.1 or later; Interfaces: D-sub 15 pin x 2, S-video: Mini DIN x 1, Composite video: RCA x 1, Audio in x 3 (RCA (L&R) x 1, mini stereo x 2), mic in x 1, Variable audio out: mini stereo x 1, networking RJ-45 x 1, Serial: RS-232c x 1, Monitor out D-sub 15 pin x 1, USB Type B x 1 (USB display, interactive pen), USB Type A x 1 (USB memory device), Speaker 10 W monaural; 14.5"W x 19.0"D x 6.1"H, Weight:14.1 lb with slide plate. Projector + pen combination integrates interactive functionality in one machine. Includes 4-year Express Exchange Parts and Labor, 1-Yr. or 500 hour lamp warranty; Includes Mount. VALUE PACKAGES DO NOT HAVE 15' USB, XGA CABLE, PEN TRAY, OR BATTERY CHARGER.



**Order # 22681**

**Co-op Price: \$1230.30**

MSRP: \$2199.00

Vendor: Midwest Computer Products, Inc.

[http://www.epson.com/cgi-bin/Store/jsp/Product.do?sku=V11H440320&BV\\_UseBVCookie=yes](http://www.epson.com/cgi-bin/Store/jsp/Product.do?sku=V11H440320&BV_UseBVCookie=yes)



**Lower Price. See Item 22691. ~ LCD 2500 Lumen Interactive Ultra-Close focus Multimedia Projector (WXGA) - Epson BrightLink 455Wi**

**Order # 22690**

**Co-op Price: \$1539.85**

MSRP: \$2199.00

Vendor: Midwest Computer Products, Inc.

### LCD 2500 Lumen Interactive Ultra-Close focus Multimedia Projector (WXGA) - Epson BrightLink 455Wi

Iowa Customers only.  
LCD, 2500 lumens; Ultra-Close focus WXGA Multimedia Projector; Built-in WhiteBoard Capability. 2500/3500 lamp life; contrast ratio 2000:1; USB Plug 'n Play for Windows 2000 or later, Mac OS X 10.5.1 or later; Interfaces Computer/component video: D-sub 15 pin x 2, S-video: Mini DIN x 1, Composite video: RCA x 1, Audio in x 3 (RCA (L&R) x 1, mini stereo x 2), mic in x 1, Variable audio out: mini stereo x 1, networking RJ-45 x 1, Serial: RS-232c x 1, Monitor out D-sub 15 pin x 1, USB Type B x 1 (USB display, interactive pen), USB Type A x 1 (USB memory device), Speaker 12 W monaural; 14.5"W x 19.0"D x 6.1"H, Weight:14.1 lb with slide plate. Now, make almost any wall interactive. Projector + pen combination integrates interactive functionality in one machine. Includes 4-year Express Exchange Parts and Labor Warranty. 1-Yr. or 500 hour lamp warranty. Includes Mount.

Order # 22691

Co-op Price: \$1416.58

MSRP: \$2199.00

Vendor: Midwest Computer Products, Inc.

[http://www.epson.com/cgi-bin/Store/jsp/Product.do?sku=V11H440020&BV\\_UseBVCookie=yes](http://www.epson.com/cgi-bin/Store/jsp/Product.do?sku=V11H440020&BV_UseBVCookie=yes)



### 5th Year Warranty for Epson BrightLink 455Wi - Epson BFEPPTA1

Pricing for this product is for Iowa Customers only.  
5th Year Parts and Labor warranty for Epson 455Wi.

Order # 22700

Co-op Price: \$40.17

MSRP:

Vendor: Midwest Computer Products, Inc.

### DLP 3200 Lumen 3D Interactive Ultra-Close focus Multimedia Projector (WXGA) - Optoma Technology Inc. TW675UTi-3D

DLP; WXGA; 3200 lumens; 3D Capable; Contrast Ratio 3000:1; 2000/3000 hour lamp; Throw Ratio 0.3; Projection Distance 1.6' to 2.1'; Image Size (Diagonal) 77" to 100"; Aspect Ratio 16:10 Native, 16:9 & 4:3; IR Remote Mouse; Audio Two 5-W Speakers; Variable Audio Out HDMI Audio Pass-Thru; Video NTSC, PAL, SECAM, SDTV (480i), EDTV (480p), HDTV (720p, 1080i/p); Monitor Loop Through (Functional in Both Normal and Standby Modes); I/O Connectors HDMI v1.3, Two VGA-In, VGA-Out, S-Video, Composite Video, RCA Stereo Audio-In, Stereo Audio-In, Stereo Audio-Out, Mic-In, 12v Trigger, Mini-USB for Pen, Mini-USB for Display, USB for Wireless Dongle, RJ-45 and RS-232; Projection Method Front, Front Ceiling, Rear, Rear Ceiling; Weight 16.76 lbs; Dimensions (W x H x D) 16.8" x 8.27" x 16"; Closed Captioning; Operating Temperature 41 to 104°F; Includes AC Power Cord, VGA to VGA Cable, Remote Control, Point Blank (v2.0) Pen, Batteries for Remote, Wall Mount, Quizdom Interactive Software, Mini-USB Cable, Multilingual CD-ROM User's Manual, Quick Start Card and Warranty Card. 5-Year warranty, first 3 years are covered by Express replacement, and the 4th and 5th years are covered for parts and labor.

Order # 22710

Co-op Price: \$1281.58

MSRP: \$3599.00

Vendor: MNJ Technologies Direct, Inc.

<http://www.optomusa.com/products/detail/TW675UTi-3D>



### DLP 2500 Lumen 3D Interactive Close focus Classroom Multimedia Projector (WXGA) - BenQ MP780ST

DLP; Interactive; WXGA; 2500 Lumens; Contrast Ratio 3000:1; Aspect Ratio 16:10 Native, 4:3 Selectable; Zoom Ratio Fixed; Image Size 48" to 300"; Throw Ratio 0.5 : 1 (95"@ 3.2 Feet); HDTV Compatibility 480i, 480p, 576i, 576p, 720p, 1080i, 1080p; Input Terminals PC: Analog RGB: D-sub 15 pin x2; Networking: RJ-45 x1; USB connector: Type A x2 (USB thumb drive, mouse/ keypad control), Type mini B x1 (USB display); AV: HDMI (v.1.3) x1, S-Video: Mini Din 4 pin x 1, Composite Video: RCA x 1, Microphone: Stereo Mini Jack x1, Audio L/R : RCA x 2, Stereo Mini Jack x 1; Output Terminals PC: D-sub 15 pin x 1; Audio: Variable Audio Out : Stereo Mini Jack x 1; Speaker: 10W x2; Control Terminal Serial Connector : RS232 9 pin (male), RJ45 x1, USB connector: Type B x1 (page up/ down, PointDraw). Dimensions (W x H x D) 12.97" x 5.11" x 9.78"; 8.38 lbs. Audible Noise 27/25 dBA; Accessories (Standard) PointDraw Pen Set (Pen+Holder, Wrist strap, USB adapter, USB cable); Manual CD; Quick Start Guide; VGA Cable; Remote Control w/battery; Power Cord. 5-Year Parts and Labor Warranty. 1-Year or 2000 Hours Lamp warranty.

Order # 22720

Co-op Price: \$1158.46

MSRP: \$2099.00

Vendor: Troxell Communications, Inc.

<http://www.benq.us/product/projector/mp780st>



## MULTIMEDIA PROJECTORS: WXGA Multimedia Projectors

### LCD 2700 Lumen Multimedia Projector (WXGA) - Epson 96W

Pricing for this product is for Iowa Customers only.  
LCD; WXGA; 2700 Lumens; Aspect Ratio 16:10; 5000/6000 hours lamp life; Throw Ratio Range 1.30 – 1.56; Size (projected distance 33" to 318"; Keystone Correction Automatic; Contrast Ratio 2000:1; Manual optical zoom/Manual focus; Interfaces: Computer/component video: D-sub 15 pin x 2; S-video: Mini DIN x 1; Composite video: RCA (Yellow) x 1; Audio in: RCA x 1 (L and R); Mini stereo x 2; USB connector: Type B x 1 (USB display, audio and mouse control); USB connector: Type A x 1 (USB memory/document camera); HDMI x 1; RJ-45 x 1 Display presentations over the network for remote instruction or broadcast messages from any networked location; Serial: RS-232c x 1; Monitor out: D-sub 15 pin x 1; Audio out: Mini stereo x 1; Microphone: Mini stereo x 1. Wireless LAN port: 802.11 b/g/n (optional – module sold separately); Speaker 16 W (mono); Operating Temperature 41 ° to 95 °F (5 ° to 35 °C). Fan Noise 28-33 dB; remote control Operating Distance 19'. 7.2 lbs. Replacement Lamp # V13H010L60. Filter # V13H134A29. 5-Year Express Exchange Parts and Labor Warranty. 1-Yr. Lamp or 500 hour warranty.

Order # 22730

Co-op Price: \$642.72

MSRP: \$899.00

Vendor: Midwest Computer Products, Inc.

[http://www.epson.com/cgi-bin/Store/jsp/Product.do?sku=V11H384020&BV\\_UseBVCookie=yes](http://www.epson.com/cgi-bin/Store/jsp/Product.do?sku=V11H384020&BV_UseBVCookie=yes)



### DLP 3500 Lumen 3D Multimedia Projector (WXGA) - Optoma Technology Inc. TW615-3D

DLP; 3500 Lumens; 3D; Lamp Life 4000/3000 Hours; Image Size 36.3" to 362"; Projection Distance 3.93' to 32.8'; Contrast Ratio 3000:1; Native WXGA (1280x800); Aspect Ratio 16:10 Native, 16:9, 4:3 Compatible; Loop Through Monitor: D-Sub 15-Pin VGA Output; Audio: Stereo Mini-Jack Output (Functional in Both Normal and Standby Modes); Security Keypad Lock, Kensington Lock and Security Bark; I/O Connectors HDMI, Two VGA-In, VGA-Out, S-Video, Composite Video, Three Stereo Audio-In, Stereo Audio-Out, 12v trigger, RJ45, RS-232 and USB; 10W Stereo Speakers; Fully Featured IR Remote with Laser Pointer and Mouse Functions; Dimensions (W x H x D) 12.76" x 3.82" x 9.21"; Weight 6.4 lbs. 5-Yr warranty with the first 3 years are covered by EXPRESS replacement, and the 4th and 5th years are covered for parts and labor. 1-Yr lamp warranty.



Order # 22740

Co-op Price: \$600.23

MSRP: \$1799.00

Vendor: MNJ Technologies Direct, Inc.

<http://www.optomusa.com/products/detail/TW615-3D>



### DLP 3200 Lumen 3D Multimedia Projector (WXGA) - Vivitek D853W

DLP WXGA Projector; 3200 Lumens; 3200:1 contrast ratio; Brilliant Color Technology for sharp and detailed image quality - filter free design for zero maintenance & low cost of ownership; rapid start-up and shutdown; 16:10 WXGA 1280 x 800 native resolution, able to display up to UXGA 1600 x 1200 resolution; HDTV compatible; High-efficiency lamp 4000 hour standard / 6000 hour in economy mode; Manual Zoom and Focus Lens; I/O Connection Ports HDMI v1.3, DVI-I, VGA-In, VGA-Out, Composite Video, S-Video, Mini-Jack Audio-In, Mini-Jack Audio-Out, RCA Stereo-In, RJ45, RS-232c, USB (Service); Keystone correction, single 10-watt internal speaker, weighs 6 pounds. Standard Accessories AC Power Cord, VGA Cable, Remote Control, Batteries for Remote, Carrying Case, Users Manual CD, Lens Cap, Warranty Card. Also includes Vivitek's 5 year Parts and Labor warranty with 1 year lamp warranty.

Order # 22750

Co-op Price: \$640.00

MSRP: \$1999.00

Vendor: Rick's Computers, Inc.

[http://www.vivitekusa.com/v\\_display\\_content\\_detail.asp?category\\_id=71&subcategory\\_id=424&product\\_id=200&subsubcategory\\_id=](http://www.vivitekusa.com/v_display_content_detail.asp?category_id=71&subcategory_id=424&product_id=200&subsubcategory_id=)



## MULTIMEDIA PROJECTORS: Lab / Board Room Multimedia Projectors

### LCD 2600 Lumen Multimedia Projector (XGA) - Epson 95

Pricing for this product is for Iowa Customers only. LCD; 2600 Lumens; 5000/6000 Hr lamp; 16W Speaker; 4:3 aspect ratio; contrast 2000:1; remote control; Interfaces: Computer / Component video: D-sub 15 pin x 2; S-video: Mini DIN x 1; Composite video: RCA (Yellow) x 1; Audio in: RCA x 1 (L and R), Mini stereo x 2; USB connector: Type B x 1 (USB display, audio and mouse control); USB connector: Type A x 1 (USB memory / document camera); HDMI x 1; RJ-45 x 1; Serial: RS-232c x 1; Monitor Out: D-sub 15 pin x 1; Audio out: Mini stereo x 1; Microphone: Mini stereo x 1; LAN Networking: RJ-45 x 1; Wireless LAN port: 802.11 b/g/n (optional module sold separately); 7 lbs; 5 year Express Exchange parts and Labor warranty; Wireless option \$103.00.

Order # 22760

Co-op Price: \$565.47

MSRP: \$699.00

Vendor: Midwest Computer Products, Inc.

[http://www.epson.com/cgi-bin/Store/jsp/Product.do?sku=V11H383020&BV\\_UseBVCookie=yes](http://www.epson.com/cgi-bin/Store/jsp/Product.do?sku=V11H383020&BV_UseBVCookie=yes)



### DLP 2800 Lumen 3D Multimedia Projector (XGA) - Optoma Technology Inc. TX542-3D

DLP; XGA; 2800 lumens; 3D; 3000:1 contrast; 4000/5000 hr lamp; 30-307" image at 3.93'-32.8' projection distance; 4:3 native, 16:9; 16:10 compatible aspect ratio; IR remote with mouse and laser pointer; two 5W speakers; Loop Through Monitor: D-Sub 15-Pin VGA Output Audio: Stereo Mini-Jack Output (Functional in Both Normal and Standby Modes); I/O Connectors HDMI, Two VGA-In, VGA-Out, S-Video, Composite Video, Three Stereo Audio-In, Stereo Audio-Out, RJ45, RS-232 and USB; 6.4 lbs; 5 year warranty, the first 3 years are covered by EXPRESS replacement, and the 4th and 5th years are covered for parts and labor. 1-Year Lamp Warranty. Carry case.

Order # 22770

Co-op Price: \$529.94

MSRP: \$1299.00

Vendor: MNJ Technologies Direct, Inc.

<http://www.optomusa.com/products/detail/TX542-3D>



## MULTIMEDIA PROJECTORS: Large Room Multimedia Projector with Zoom Lens

### LCD 3000 Lumen Large Room Multimedia Projector (XGA) - Epson 905

Pricing for this product is for Iowa Customers only. LCD; 3000 Lumens; 2000:1 contrast; 5000/6000 Hr lamp; 4:3 aspect ratio; 30'300" image; 16W speaker; remote control; Network; Interfaces: Computer / Component video: D-sub 15 pin x 2; S-video: Mini DIN x 1; Composite video: RCA (Yellow) x 1; Audio in: RCA x 1 (L and R), mini stereo x 2; USB connector: Type B x 1 (USB display, audio and mouse control), Type A x 1 (USB memory / document camera); HDMI x 1; RJ-45 x 1; Serial: RS-232c x 1; Monitor out: D-sub 15 pin x 1; Audio out: Mini stereo x 1; Microphone: Mini stereo x 1; Wireless LAN port: 802.11 b/g/n (optional module sold separately); 7.4 lbs; 4 Yr Express Exchange Parts and Labor warranty, Optional wireless \$103.00 extra.

Order # 22780

Co-op Price: \$689.07

MSRP: \$949.00

Vendor: Midwest Computer Products, Inc.

[http://www.epson.com/cgi-bin/Store/jsp/Product.do?sku=V11H387020&BV\\_UseBVCookie=yes](http://www.epson.com/cgi-bin/Store/jsp/Product.do?sku=V11H387020&BV_UseBVCookie=yes)



---

**5th Year Warranty for Epson 905 - Epson BFEPPTPA1**

Pricing for this product is for Iowa Customers only.  
5th year parts and labor warranty for Epson 905.

**Order # 22790**

**Co-op Price: \$40.17**

MSRP:

Vendor: Midwest Computer Products, Inc.

---

**DLP 5000 Lumen Large Room Multimedia Projector (XGA) - Optoma Technology Inc. TX779P-3D**

DLP; XGA; 5000 lumens; 3D; 3000:1 contrast; 2000/3000 hr lamp; 23.4"-300" image at 3.28'-39.4' projection distance; IR remote mouse with laser pointer; Monitor Loop Through D-Sub 15-Pin VGA Output (Functional in Both Normal and Standby Modes); I/O Connectors HDMI, Two VGA-In, VGA-Out, DVI-D, S-Video, Composite Video, Stereo RCA Audio-In, Stereo Audio-In, Stereo Audio-Out, RS-232, USB, RJ45 and 12V trigger; 3 W speaker; 7.8 lbs; 5 yr warranty, the first 3 years are covered by EXPRESS replacement, and the 4th and 5th years are covered for parts and labor. 1 Year Lamp Warranty. Carry case.

**Order # 22800**

**Co-op Price: \$892.24**

MSRP: \$3199.00

Vendor: MNJ Technologies Direct, Inc.

<http://www.optomusa.com/products/detail/TX779P-3D>



---

**DLP 3500 Lumen Large Room Multimedia Projector (XGA) - Optoma Technology Inc. TX615**

DLP; XGA; 3500 lumens; 3000:1 contrast ratio; 3000/4000 hr lamp; 27.5"-303" image at 3.93'-39.3' projection distance; 4:3, 16:9, 16:10 aspect ratio; two 5W stereo speakers; IR remote w laser pointer and mouse; HDMI, Two VGA-In, VGA-Out, S-Video, Composite Video, Three Stereo Audio-In, Stereo Audio-Out, +12V Trigger, USB, RS-232 and RJ45; 5 year warranty, the first 3 years are covered by EXPRESS replacement, and the 4th and 5th years are covered for parts and labor. 1 Year Lamp Warranty. Carry case.

**Order # 22810**

**Co-op Price: \$551.57**

MSRP: \$1599.00

Vendor: MNJ Technologies Direct, Inc.

<http://www.optomusa.com/products/detail/TX615>



---

**DLP 3500 Lumen 3D Large Room Multimedia Projector (XGA) - Vivitek D837**

DLP WXGA Projector; 3500 Lumens; 2500:1 contrast ratio; Brilliant Color Technology for sharp and detailed image quality - filter free design for zero maintenance & low cost of ownership; rapid start-up and shutdown; XGA 1024 x 768 native resolution, able to display up to UXGA 1600 x 1200 resolution; HDTV compatible; High-efficiency lamp 3000 hour standard / 4000 hour in economy mode; Manual Zoom and Focus Lens; I/O Connection Ports - HDMI v1.3, DVI-I, Dual VGA-In, VGA-Out, Composite Video, S-Video, Mini-Jack Audio-In, Mini-Jack Audio-Out, RCA Stereo-In, RJ45, 12V Trigger, RS-232c, USB (Service), RJ45; Keystone correction, single 2-watt internal speaker, weighs 5.7 pounds. Standard Accessories AC Power Cord, VGA Cable, Remote Control, Batteries for Remote, Carrying Case, Users Manual CD, Lens Cap, Warranty Card. Also includes Vivitek's 5 year Parst and Labor warranty with 1 year lamp warranty.

**Order # 22820**

**Co-op Price: \$554.99**

MSRP: \$1099.00

Vendor: Rick's Computers, Inc.

[http://www.vivitekusa.com/v\\_display\\_content\\_detail.asp?category\\_id=71&subcategory\\_id=424&product\\_id=172&subsubcategory\\_id=](http://www.vivitekusa.com/v_display_content_detail.asp?category_id=71&subcategory_id=424&product_id=172&subsubcategory_id=)



---

**DLP 3600 Lumens 3D Large Room Multimedia Projector (XGA) - Vivitek D859**

DLP; 3600 lumens; 3000:1 contrast; 3D; 2500/4500 hr lamp; 30-300" image at 3.28'-32.8' projection distance; 4:3 native, 16:9, 16:10 compatible aspect ratio; 10 W mono speaker; I/O Ports HDMI v1.3, VGA-In, VGA-Out, Composite Video, Mini-Jack Audio-In, Mini-Jack Audio-Out, RCA Stereo-In, Microphone In, RJ45, RS-232c, USB (Service); remote control; 6 lbs; 5 Yr parts and labor warranty. Carry case.

**Order # 22830**

**Co-op Price: \$589.39**

MSRP: \$1499.00

Vendor: Troxell Communications, Inc.

[http://www.vivitekusa.com/v\\_display\\_content\\_detail.asp?category\\_id=71&subcategory\\_id=424&product\\_id=211&subsubcategory\\_id=](http://www.vivitekusa.com/v_display_content_detail.asp?category_id=71&subcategory_id=424&product_id=211&subsubcategory_id=)



---

**DLP 3700 Lumen 3D Large Room Multimedia Projector (XGA) - BenQ MX763**

DLP; XGA; 3700 Lumen; 5300:1 Ultra-High Contrast Ratio; 1.6x Big Zoom Ratio; Aspect Ratio Native 4:3 (5 aspect ratio selectable); Interface Computer in (D-sub 15pin) x 2 (shared with Component video); Monitor out (D-sub 15pin) x1; Composite; Video in (RCA) x1; S-Video in (Mini DIN 4pin) x1; Audio in (Mini Jack) x2; Audio L/R in (RCA) x2; Audio out (Mini Jack) x1; Microphone in (Mini Jack) x1; Speaker 10W x 2; HDMI V1.3 x1; LAN (RJ45) x 1 (LAN Control & LAN Display); USB (Type A) x 2 (USB Reader&Keyboard/Mouse&Wireless Dongle); USB (Type Mini B) x 1 (USB Display & Download & Page up/down); DC 12V Trigger (3.5mm Jack) x1; RS232 (DB-9pin) x1; 2000/3000 hr lamp; Manual Vertical Lens Shift allows you to make minor projection adjustments to the projected image by shifting the image up by 20°; Auto/Manual Keystone ± 40 degrees; two built-in 10W speakers; Microphone Input; PC-less Presentation with USB Reader and Remote Desktop; Plug 'n Play with USB Display; Wired and Wireless LAN Display; LAN Control with Crestron and PJ-Link. Dimensions(W x H x D) 13.35" x 4.74" x 9.92". 7.3 lbs. 5-year Parts and Labor Warranty. 1-year lamp warranty.

**Order # 22840**

**Co-op Price: \$772.50**

MSRP:

Vendor: Troxell Communications, Inc.

<http://www.benq.us/product/projector/mx763>



## MULTIMEDIA PROJECTORS: Lightweight / Portable Multimedia Projectors

**Lower Price. See Item 22851. ~ LCD 2600 Lumen Portable Multimedia Projector (WXGA) - Epson 1760W**



**Order # 22850**  
**Co-op Price: \$747.78**  
MSRP: \$899.00

Vendor: Midwest Computer Products, Inc.

### LCD 2600 Lumen Portable Multimedia Projector (WXGA) - Epson 1760W

Pricing for this product is for Iowa Customers only.  
LCD; 2600 Lumens; WXGA (1280 x 800); 2000:1 contrast; 4000 Hr lamp; 16:10 native 4:3, 16:9 supported aspect ratio; Size (projected distance) 30"- 300" 16:10 (2.2' - 26.8"); Plug n Play; HDMI, 1W Speaker; built-in closed captioning; 3.7 lbs; What's In The Box PowerLite 1760W projector, power cable, computer cable (VGA), projector remote control with batteries, USB cable, audio adapter, soft carrying case, user manual CD, Quick Setup Sheet, PrivateLine support card, registration card, password protection sticker and security screw; 4 Yr warranty; Optional wireless. 4-Year Parts and Labor Warranty.



**Order # 22851**  
**Co-op Price: \$649.29**  
MSRP: \$899.00

Vendor: Midwest Computer Products, Inc.



[http://www.epson.com/cgi-bin/Store/jsp/Product.do?sku=V11H361120&BV\\_UseBVCookie=yes#1](http://www.epson.com/cgi-bin/Store/jsp/Product.do?sku=V11H361120&BV_UseBVCookie=yes#1)

### 5th Year Warranty for Epson 1760W - Epson BFEPPTA1

Pricing for this product is for Iowa Customers only.  
5th Year Parts and Labor warranty for Epson 1760W.

**Order # 22860**  
**Co-op Price: \$40.17**  
MSRP:

Vendor: Midwest Computer Products, Inc.

### DLP 3000 Lumen Portable Multimedia Projector (WXGA) - Optoma Technology Inc. TW1692

DLP; WXGA; 3000 lumen; 2500:1 contrast; 2000/3000 hr lamp; 30.95"-371" image at 3.9'-39.4' projection distance; 16:10 native, 16:9, 4:3 compatible contrast ratio; 1W speaker; I/O Connectors HDMI v1.3, VGA-In, S-Video, Composite Video, Audio-In and USB; 3.2 lbs; Standard Accessories AC Power Cord, VGA to VGA Cable, USB Cable, Remote Control, Batteries for Remote, Lens Cap, Carrying Case, CD-ROM User's Manual, Quick Start Card and Warranty Card. 5 year warranty, the first 3 years are covered by EXPRESS replacement, and the 4th and 5th years are covered for parts and labor. 1-Year Lamp Warranty.

**Order # 22870**  
**Co-op Price: \$692.16**  
MSRP: \$1899.00

Vendor: MNJ Technologies Direct, Inc.

<http://www.optomausa.com/products/detail/TW1692>



### DLP 3000 Lumen Portable Multimedia Projector (WXGA) - Vivitek D330WX

DLP; WXGA(1280 x 800); 3000 lumens; 2500:1 contrast; 2000/3000 hr lamp; 40"-310" image at 4.9'-32.8' projection distance; 16:10 native, 4:3, 16:9 aspect ratio compatible; 1W mono speaker; I/O Connection Ports HDMI v1.3, VGA-In, S-Video, Composite Video, Mini-Jack Audio-In, USB (Service); 3.2 lbs; Standard Accessories AC Power Cord, VGA Cable, Remote Control, Batteries for Remote, Carrying Case, User's Manual, Warranty Card. 5 yr parts and labor warranty.

**Order # 22880**  
**Co-op Price: \$646.61**  
MSRP: \$999.00

Vendor: Troxell Communications, Inc.

[http://www.vivitekusa.com/v\\_display\\_content\\_detail.asp?category\\_id=71&subcategory\\_id=422&product\\_id=183&subsubcategory\\_id=](http://www.vivitekusa.com/v_display_content_detail.asp?category_id=71&subcategory_id=422&product_id=183&subsubcategory_id=)



## MULTIMEDIA PROJECTORS: Multimedia Wireless Projectors

### Wireless Connectivity for Multimedia Projector - InFocus LITE SHOW 3

Add the InFocus LiteShow III wireless adapter to any projector or other display to quickly and easily share data, audio, and video over a secure wireless connection. Eliminates cables and speeds time to presentation; On-board video decoding for fast, smooth playback; 802.11n for fast data transmission; Connect and display multiple computers; Creates a secure wireless network access point. Multiple security levels. Resolution Input (max) QXGA (2048 x 1536); Output Resolution Support XGA (1024 x 768), WXGA (1280 x 768, 1280 x 800); Computer Compatibility PC, Mac; Data Transfer Rate Wireless: Up to 150 Mbps, LAN: 10/100; Encryption / Security IEEE Standard 64/128 bit WEP/WPA/WPA2-PSK; Range Up to 300 feet. Wi-Fi Compliant 802.11 b/g/n with MIMO. 1-Year warranty.

**Order # 22890**  
**Co-op Price: \$221.45**  
MSRP: \$299.00

Vendor: Midwest Computer Products, Inc.

<http://www.infocus.com/accessories/wireless-and-networking/infocus-liteshow-iii>



### Wireless Connection USB Key for Multimedia Projector - Epson

If you are interested in this product, contact Bud Carruthers, IEC Coordinator, 319-753-6561 ext 1157 or bcarruthers@iec-ia.org

**Order # 22900**  
**Co-op Price: \$83.43**  
MSRP:

Vendor: Midwest Computer Products, Inc.



## Wireless Connectivity for Multimedia Projector - BenQ 5J.J0614.A21

Wireless Dongle / Wireless adapter connects computers to BenQ MP780ST, MX812ST, Mx760, MX660. Technical Information Wi-Fi Standard: IEEE 802.11n (draft); ISM Band; ISM Maximum Frequency: 2.40 GHz; Wireless Transmission Speed 54 Mbps; Interface host: USB.



**Order # 22910**  
**Co-op Price: \$29.38**  
MSRP: \$49.00

Vendor: Troxell Communications, Inc.

<http://www.trox.com>



## Ceiling Mounting Brackets for Multimedia Projectors - Peerless PRG-UNV

Precision Gear Projector Mount for Projectors Weighing Up to 50 lb; Peerless' PRG Precision Gear Projector Mount is changing the way image alignment is done. The patent-pending precision gear design provides exact tilt and roll image positioning with a simple turn of a knob. Once the installer sets the precision gear to the desired position it stays securely in place. It will not shift during projector maintenance, bulb replacement, and will not loosen or change alignment due to vibration, accidental bumping etc. With Peerless' PRG Precision Gear Projector Mount the installer sets it and forgets it.

**Order # 22940**  
**Co-op Price: \$99.86**  
MSRP: \$229.00

Vendor: Midwest Computer Products, Inc.

<http://www.peerlessmounts.com/dyn/Products/BrowseProduct.aspx/sp/9840/>



## MULTIMEDIA PROJECTORS: Projector Mounting Brackets

### Ceiling Mounting Brackets for Multimedia Projectors - Peerless PRSUNV

Projector Ceiling Mount for Projectors Weighing Up to 25 lb; The PRS projector mount comes pre-assembled for quick and easy installation. Its low profile design and three alignment functions allow unmatched versatility for most mounting applications. Peerless UL rated the PRS which includes a quick release mechanism for projector maintenance or removal. Available colors; black, silver and white.

**Order # 22920**  
**Co-op Price: \$80.05**  
MSRP: \$235.00

Vendor: Troxell Communications, Inc.

<http://www.peerlessmounts.com/dyn/Products/BrowseProduct.aspx/tn/315>



### Short Throw Ceiling Mounting Brackets for Multimedia Projectors - Peerless PSTK-028

This Universal Ultra-Short Throw Projector Mount (PSTK models) provides flexibility to install into a single stud or a double stud application and gives up to 6" (152 mm) of lateral adjustment for perfect projector placement any time. In addition, the universal sliding carriage design of the arm is easily adjustable to accommodate ultra-short throw projector distance requirements of 0" to 28". Complimentary to the universal design of the ultra-short throw projector arm this comprehensive package comes with Peerless Universal Precision Gear Projector Mount that makes image alignment as easy as a simple turn of a knob. Tying the installation together is its internal cable management system that is the oasis of a clean clutter free installation. Peerless delivers a comprehensive solution in one package for any ultra-short throw projector installation. For ultra-short throw projectors up to 50 lb.

**Order # 22950**  
**Co-op Price: \$173.35**  
MSRP: \$230.00

Vendor: Camcor, Inc.

<http://www.camcor.com/cgi-bin/cat/id=1259172185/?keywords=PSTK028>



### Ceiling Mounting Brackets for Multimedia Projectors - Peerless PJF2UNV

Projector Ceiling Mount for Projectors Weighing Up to 50 lb; Includes Spider universal adapter plate. The PJF2 provides a clean look with its NEW cable management capabilities. The included extension column connector incorporates internal cord management paths that keep unsightly cords concealed from view. The mount also features a ceiling plate, ball and socket design, multidirectional positioning (roll, pitch, and swivel) for proper image alignment and complete Armor Lock security at every connection point. This projector mount is perfect for use in classrooms, boardrooms or anywhere a projector needs to be mounted. The PJF2 can be flush mounted, mounted using 1-1/2" diameter extension column, mounted using 1/2" thread rod or wall mounted. Both universal and model specific PJF2 mounts include pre-assembled adapter plates to shorten installation time. 5 Year warranty.

**Order # 22930**  
**Co-op Price: \$73.65**  
MSRP: \$189.00

Vendor: Troxell Communications, Inc.

<http://www.peerlessmounts.com/dyn/Products/BrowseProduct.aspx/sp/7570/>



### Short Throw Projector Wall Mounting Arm for Epson 410 W - Epson V12H003B24

Pricing for this product is for Iowa and Illinois Customers only. The perfect mount for the Epson PowerLite 400W wide-screen projector, the ELPMSTPW Short Throw Projector Wall Mount offers an easier, more affordable solution for installation applications.

**Order # 22960**  
**Co-op Price: \$184.37**  
MSRP: \$279.00

Vendor: Midwest Computer Products, Inc.

[http://www.epson.com/cm\\_upload/0/000/113/639/PL400W\\_Mount\\_CatSheet.pdf?BV\\_UseBVCookie=yes](http://www.epson.com/cm_upload/0/000/113/639/PL400W_Mount_CatSheet.pdf?BV_UseBVCookie=yes)



Projector and Mount Sold Separately

## Universal Short Throw Projector Wall Mounts - Premier UNI-PDS

Flexible mounting options, mounts to single and/or dual studs (16", 18", or 24" centers), steel studs, and concrete. Versatile – supports short-throw projectors by extending between 7" - 27" from the wall. Cable routing - discretely manage signal and power cables through arm and into GearBox. Integrated GearBox for PC, Mac mini or control modules is secured with Lock-It hardware. Adjustable Height – can adjust up to 2" for post-installation correction. Universal Projector mount includes PDS-PLUS projector mount for +/- 16.5° pitch, +/- 7.5° roll and 41° yaw. Lifetime Warranty.



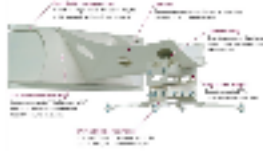
Order # 22970

Co-op Price: \$219.79

MSRP: \$429.00

Vendor: Troxell Communications, Inc.

<http://www.mounts.com/product?product=UNI-PDS>



## Universal Short Throw Projector Wall Mount with Built-in Audio System - Premier UNI-PDS-AUD

Provides a quick and secure mounting solution for your projectors, and offers an additional audio support. You can easily extend your mount from 37-67" (94-170 cm) from wall. The unit comes with a PDS-PLUS-W Universal Projector Mount (White), which is designed to hold projectors weighing up to 75 lb (34 kg). Compatible with 1.5" NPT, the PDS-PLUS-W Projector Mount provides 360° rotation with 33° tilt and 15° roll adjustment.



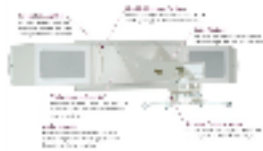
Order # 22980

Co-op Price: \$430.70

MSRP: \$1049.00

Vendor: Troxell Communications, Inc.

<http://www.mounts.com/product?product=UNI-PDS-AUD>



## Adjustable Extension Projector Mount Kit for Multimedia Projectors - Peerless PRSKIT0811

Adjustable Height. Comes in three adjustable height ranges (in 1" increments): 0" to 11". Projector Ceiling Mount Kit for Projectors Weighing Up to 25 lb. The new PRS series adjustable height ceiling kits provide an all in one solution for quick and easy installations with variable drop ceiling lengths. It can be mounted to any common ceiling structure, and can be flush mounted where a low profile application is required. Includes PRS Series Projector Mount that features four independent adjustment points allowing for quick and precise image alignment. Includes the Spider Universal Adapter Plate which extends up to 17.63" (448 mm) to fit most projector models.

Order # 22990

Co-op Price: \$116.81

MSRP: \$240.00

Vendor: Troxell Communications, Inc.

<http://www.peerlessmounts.com/dyn/Products/BrowseProduct.aspx/tn/317/u/t>



## Adjustable Extension Projector Mount Kit for Multimedia Projectors - Peerless PRSKIT1420

Adjustable Height. Comes in three adjustable height ranges (in 1" increments): 14 to 20". Projector Ceiling Mount Kit for Projectors Weighing Up to 25 lb. The new PRS series adjustable height ceiling kits provide an all in one solution for quick and easy installations with variable drop ceiling lengths. It can be mounted to any common ceiling structure, and can be flush mounted where a low profile application is required. Includes PRS Series Projector Mount that features four independent adjustment points allowing for quick and precise image alignment. Includes the Spider Universal Adapter Plate which extends up to 17.63" (448 mm) to fit most projector models.

Order # 23000

Co-op Price: \$139.86

MSRP: \$255.00

Vendor: Troxell Communications, Inc.

<http://www.peerlessmounts.com/pcattachments/TD%20SHEET-054-9622-1-4.PDF>



## Adjustable Extension Projector Mount Kit for Multimedia Projectors - Peerless PRSKIT2026

Adjustable Height. Comes in three adjustable height ranges (in 1" increments): 20 to 26". Projector Ceiling Mount Kit for Projectors Weighing Up to 25 lb. The new PRS series adjustable height ceiling kits provide an all in one solution for quick and easy installations with variable drop ceiling lengths. It can be mounted to any common ceiling structure, and can be flush mounted where a low profile application is required. Includes PRS Series Projector Mount that features four independent adjustment points allowing for quick and precise image alignment. Includes the Spider Universal Adapter Plate which extends up to 17.63" (448 mm) to fit most projector models.

Order # 23010

Co-op Price: \$140.89

MSRP: \$266.00

Vendor: Troxell Communications, Inc.

<http://www.peerlessmounts.com/pcattachments/TD%20SHEET-054-9622-1-4.PDF>



## Peerless Round Structural Ceiling Plate - Peerless ACC570

The Round Ceiling Plate is designed for use with Peerless Vector Pro LCD Projector Mounts. Standard threaded gas pipe can be used for extensions. Also works with Peerless PJRL40 & PJRL45.

Order # 23020

Co-op Price: \$16.01

MSRP: \$25.00

Vendor: Troxell Communications, Inc.

<http://www.peerlessmounts.com/dyn/Products/BrowseProduct.aspx/sp/485>



## Peerless Truss Ceiling Adapter - Peerless ACC577

This ceiling fixture attaches to a round truss up to 3" (76mm) in diameter or a square, rectangular, or I-beam truss [3" wide x 3.5" high (76 x 89mm) max.]. The 1 1/2-11.5 NPS threaded fitting interfaces with Peerless Fixed Length and Adjustable Length Extension Columns.

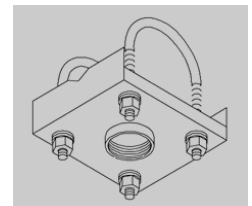
Order # 23030

Co-op Price: \$26.13

MSRP: \$51.00

Vendor: Troxell Communications, Inc.

<http://www.peerlessmounts.com/dyn/Products/BrowseProduct.aspx/tn/103>



### Peerless Unistrut Adapter - Peerless ACC550

Peerless' Unistrut Adapter for Truss Ceilings is used for flat panel, CRT and projector applications. This ceiling fixture attaches to 1 5/8" x 1 5/8" Unistrut. The 1 1/2-11.5 NPS threaded fitting interfaces with Peerless Fixed Length and Adjustable Length Extension Columns.

Order # 23040

Co-op Price: \$14.91

MSRP: \$30.00

Vendor: Troxell Communications, Inc.



<http://www.peerlessmounts.com/dyn/Products/Br owseProduct.aspx/tn/108>

### Peerless Lightweight Cathedral Ceiling Adapter Plate - Peerless ACC912

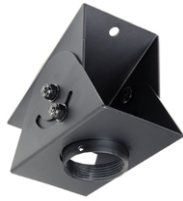
The Lightweight Cathedral Ceiling Plate allows a projector to be mounted to an angled ceiling. It can be used with or without an extension column and offers 120° of adjustment. It is specifically designed for projectors and offers a low-profile, secure solution to complement sleek, lightweight projectors.

Order # 23051

Co-op Price: \$30.11

MSRP: \$39.00

Vendor: Troxell Communications, Inc.



<http://www.peerlessmounts.com/dyn/Products/Br owseProduct.aspx/tn/106>

### 4" x 4" Unistrut and Structural Ceiling Plate - Peerless CMJ300

Peerless Unistrut and Structural Ceiling Plates attach to standard 1 5/8" x 1 5/8" unistrut or to a solid structural surface. 4" x 4" Ceiling Plate.

Order # 23061

Co-op Price: \$22.13

MSRP: \$25.00

Vendor: Troxell Communications, Inc.



<http://www.peerlessmounts.com/dyn/Products/Br owseProduct.aspx/tn/135>

### Peerless Variable Position Suspended Ceiling Kit, One Piece - Peerless CMJ450

The Suspended Ceiling Plate for Jumbo Mounts consists of a 24"(610mm) x 24"(610mm) ceiling tray suspended by four tie wires from the true ceiling above. A fifth "safety cable" is also provided.

Order # 23070

Co-op Price: \$67.69

MSRP: \$149.00

Vendor: Troxell Communications, Inc.



<http://www.peerlessmounts.com/dyn/Products/Br owseProduct.aspx/tn/136>

### Peerless Variable Position Suspended Ceiling Kit Light - Peerless CMJ455

The Lightweight Suspended Ceiling Plate for Projector Mounts consists of an 8"(203mm) x 24"(610mm) filler tray and a 15.75"(400mm) x 24"(610mm) ceiling tray suspended by four tie wires from the true ceiling above. (CMJ455 does not include hanger brackets)

Order # 23080

Co-op Price: \$49.78

MSRP: \$98.00

Vendor: Troxell Communications, Inc.



<http://www.peerlessmounts.com/dyn/Products/Br owseProduct.aspx/sp/611/>

### Peerless Suspended Ceiling Kit Adj. - Peerless CMJ500R1

The Lightweight Suspended Ceiling Plate for Projector Mounts consists of an 8"(203mm) x 24"(610mm) filler tray and a 15.75"(400mm) x 24"(610mm) ceiling tray suspended by four tie wires from the true ceiling above. (CMJ455 does not include hanger brackets); White.

Order # 23090

Co-op Price: \$54.44

MSRP: \$121.00

Vendor: Troxell Communications, Inc.



<http://www.peerlessmounts.com/dyn/Products/Br owseProduct.aspx/sp/12391/>

### Adjustable Extensions for Ceiling Mounts - Peerless AEC0609W

6"-9" Adjustable Height Extension Column. Designed to blend in and work with almost any environment, the AEC adjustable column features the ability to extend drop lengths from 6" to 9". Whether it's for the home cinema, an office or mounted from a tall cathedral ceiling, the adjustable column supports up to 900lb, making it ideal for home, exhibit, retail or digital signage applications. The new slot design makes for easy incremental height adjustments to find the perfect position and then securely locking it into place. The AEC column's cylinder shape conveniently offers ample internal space for cable management of multiple cords, ultimately giving a clean look to any installation. White.

Order # 23100

Co-op Price: \$33.30

MSRP: \$42.00

Vendor: Troxell Communications, Inc.

<http://www.peerlessmounts.com/dyn/Products/Br owseProduct.aspx/sp/12436/>

peerless



### Adjustable Length Extension Columns, - Peerless AEC012018

12" to 18" Adjustable Height Extension Column. Designed to blend in and work with almost any environment, the AEC adjustable column features the ability to extend drop lengths from 12" to 18". Whether it's for the home cinema, an office or mounted from a tall cathedral ceiling, the adjustable column supports up to 900lb, making it ideal for home, exhibit, retail or digital signage applications. The new slot design makes for easy incremental height adjustments to find the perfect position and then securely locking it into place. The AEC column's cylinder shape conveniently offers ample internal space for cable management of multiple cords, ultimately giving a clean look to any installation. Black.

Order # 23110

Co-op Price: \$50.72

MSRP: \$104.00

Vendor: Troxell Communications, Inc.

<http://www.peerlessmounts.com/dyn/Products/Br owseProduct.aspx/sp/12089/>

peerless



---

**Adjustable Length Extension Columns - Peerless AEC018024**

18" to 24" Adjustable Height Extension Column. Designed to blend in and work with almost any environment, the AEC adjustable column features the ability to extend drop lengths from 18" to 24". Whether it's for the home cinema, an office or mounted from a tall cathedral ceiling, the adjustable column supports up to 900lb, making it ideal for home, exhibit, retail or digital signage applications. The new slot design makes for easy incremental height adjustments to find the perfect position and then securely locking it into place. The AEC column's cylinder shape conveniently offers ample internal space for cable management of multiple cords, ultimately giving a clean look to any installation. Black.

**Order # 23120**

**Co-op Price: \$55.85**

MSRP: \$105.00

Vendor: Troxell Communications, Inc.

[http://www.peerlessmounts.com/dyn/Products/Br  
owseProduct.aspx/sp/12092/](http://www.peerlessmounts.com/dyn/Products/Br<br/>owseProduct.aspx/sp/12092/)



---

**Peerless Projector Enclosure - Peerless PE1120**

Lock in the highest level of projector security with the PE1120. Solid 1/2" diameter steel bars provide protection from theft or accidental damage. Installation is a snap – just snap the two halves of the steel frame together and hook the enclosure body to the frame. It's so easy that you can attach it to existing multimedia projector installations without having to remove the projector mount or disturb the image alignment settings. It's the toughest security available with a user-friendly design. Black.

**Order # 23150**

**Co-op Price: \$189.05**

MSRP: \$369.00

Vendor: Troxell Communications, Inc.

[http://www.peerlessmounts.com/dyn/Products/Br  
owseProduct.aspx/tn/280](http://www.peerlessmounts.com/dyn/Products/Br<br/>owseProduct.aspx/tn/280)



---

**Adjustable Length Extension Columns - Peerless AEC0203**

2' to 3' Designed to blend in and work with almost any environment, the AEC adjustable column features the ability to extend drop lengths from 2' to 3'. Whether it's for the home cinema, an office or mounted from a tall cathedral ceiling, the adjustable column supports up to 900lb, making it ideal for home, exhibit, retail or digital signage applications. The new slot design makes for easy incremental height adjustments to find the perfect position and then securely locking it into place. The AEC column's cylinder shape conveniently offers ample internal space for cable management of multiple cords, ultimately giving a clean look to any installation. Black.

**Order # 23130**

**Co-op Price: \$60.97**

MSRP: \$120.00

Vendor: Troxell Communications, Inc.

[http://www.peerlessmounts.com/dyn/Products/Br  
owseProduct.aspx/sp/12068/](http://www.peerlessmounts.com/dyn/Products/Br<br/>owseProduct.aspx/sp/12068/)



---

**Adjustable Length Extension Columns - Peerless AEC0305**

3' to 5' Adjustable. Peerless ADJ Adjustable Extension Columns represent the perfect choice anytime drop adjustments are needed. The exact position of the mount and display need not be predetermined and the length can easily be adjusted at 1" increments at the time of installation and then locked into place. Lengths from 3' to 5' are available. The Adjustable Extension Column is compatible Peerless' TV mounts, flat panel mounts and projector mounts. This product is for use with single display installations.

**Order # 23140**

**Co-op Price: \$76.33**

MSRP: \$122.00

Vendor: Troxell Communications, Inc.

[http://www.peerlessmounts.com/dyn/Products/Br  
owseProduct.aspx/tn/130](http://www.peerlessmounts.com/dyn/Products/Br<br/>owseProduct.aspx/tn/130)

